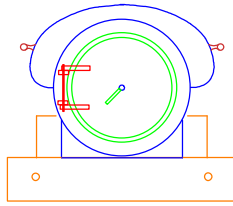


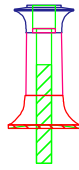
Smoke box - 18mm tube
 - Boiler of 15.9 mm tube
 - pack between with 16.7mm
 - flush firebox



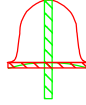
tank formers fit in slits in boiler tube
 1. Hold formers in boiler and solder in fixing rods
 [check if any need motor cutout]
 2. Remove assembly from boiler
 3. Wrap tank and solder
 4. Fit to boiler tube
 [make front/back formers without holes]

Loco 167
 - total height 13'1"

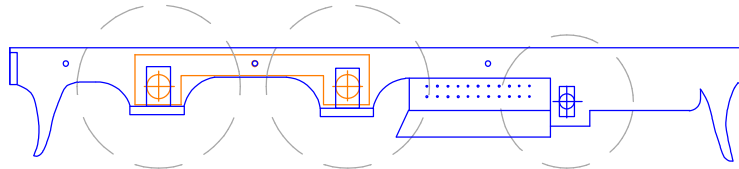
Note - smokebox hinge
 on left!



Chimney
 - top leave brass
 - middle black
 - base leave brass
 - patinate brass to
 appear like copper



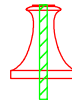
Dome and
 valve bonnet
 left as brass



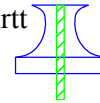
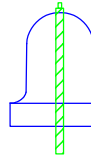
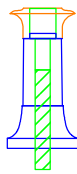
compensation bars
 (one each side of motor
 with axles running in them)
 rock on common pivot to
 brake hanger

Boiler - 16.6mm tube
 Smokebox - make near 18mm
 including wrapper
 Firebox - make near 18.5mm

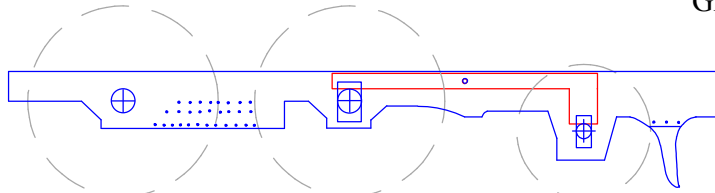
This valve bonnet
 is as per Beyer P and
 Nasmyth locos



From Burt
 fig 71



Spithead type
 from Bradley
 fig 46 - appears
 to be as E.
 Grinstead photo



compensation beam
 rock on pivot